

**SENATE SPECIAL COMMITTEE
FACULTY IT SUBCOMMITTEE**

Committee Members

FirstName ↕	LastName	MemberTitle	MemberPosition	College	Email
Frank	Bova	Professor	Chair - MED	College of Medicine	bova@neurosurgery.ufl.edu
Palvo (Pasha)	Antonenko	Assistant Professor	Member - EDUC	College of Education	p.antonenko@coe.ufl.edu
Trevor	Bopp	Lecturer	Member - HHP	College of Health and Hum	tbopp@hhp.ufl.edu
Thomas	Brown	Professor	Member - DN	Dentistry	tbrown@dental.ufl.edu
Daniel	Brown	Associate Professor	Member - VET MED	Veterinary Medicine	drbrown@ufl.edu
Dave	Carlson	Professor	Member - JOU	Journalism	dcarlson@jou.ufl.edu
Jason	Craggs	Assistant Research Professor	Member - PHHP	Public Health and Health P	jcraggs@phhp.ufl.edu
Michael	Dark	Assistant Professor	Member - VET MED	VET MED	darkmich@ufl.edu
Randell	Doty	Clinical Associate Professor	Member - PHARM	PHARM	doty@cop.ufl.edu
Elias	Eldayrie	Vice President and CIO	Liaison		eldayrie@ufl.edu
Stacey	Ewing	Assistant University Librarian	Member - Libraries	Libraries	staewin@uflib.ufl.edu
Terry	Harpold	Associate Professor	Member - CLAS	LS	tharpold@ufl.edu
Jane	Houston	Clinical Assistant Professor	Member - NURS	College of Nursing	houstonj@ufl.edu
Raymond	Issa	Professor and Program Director	Member - DCP	Design, Construction and F	raymond-issa@ufl.edu
Tawnya	Means	Director	Member - BA	Business Administration	tawnya.means@warrington.ufl.edu
Rafael	Munoz-Carpena	Professor	Member - IFAS	IFAS	carpena@ufl.edu
Jack	Stenner	Associate Professor	Member - CFA	Fine Arts	stenner@ufl.edu
Joe	Wilson	Assistant Professor	Member - ENG	Engineering	jnw@cise.ufl.edu

- Committee was created by Cheri Brodeur and Elias Eldayrie
- Previous committee had morphed from faculty representation to support representation – Why?

Agenda items

- Balance between privacy and access
- Wireless bandwidth
- Standardizing (?) classrooms
- Support for faculty as they transition to online
- Support needed to facilitate flipped classroom
- Revamping of UF IT Strategic plan
- Faculty difficulty in Identifying IT resources
- IT Distance Ed Committee (liaisons)
- IT Survey to UF Faculty

General IT Support Issues and Opportunities-There are no barriers hampering any work collaborating outside UF

General IT Support Issues and Opportunities-UF policies are sufficiently flexible so they can be observed while still allowing me to be productive

General IT Support Issues and Opportunities-If I need local (i.e. departmental) IT support I know where it can be obtained, in a timely manner

General IT Support Issues and Opportunities-If I need out of department IT support I know where it can be obtained, in a timely manner

General IT Support Issues and Opportunities-I can access UF resources on all my devices when on campus

General IT Support Issues and Opportunities-I can access UF resources on all my devices when off campus

General IT Support Issues and Opportunities-I can access UF resources on any web browsers on campus

General IT Support Issues and Opportunities-I can access UF resources on any web browsers off campus

General IT Support Issues and Opportunities-I always have the necessary UF network access when on campus

General IT Support Issues and Opportunities-I always have the necessary UF network access when off campus

The main computer I use is currently? _____ years old.-Years

General IT Support Issues and Opportunities-UF is positioned to take advantage of new teaching opportunities

General IT Support Issues and Opportunities-UF is positioned to take advantage of new research opportunities

General IT Support Issues and Opportunities-UF is positioned to take advantage of new service opportunities

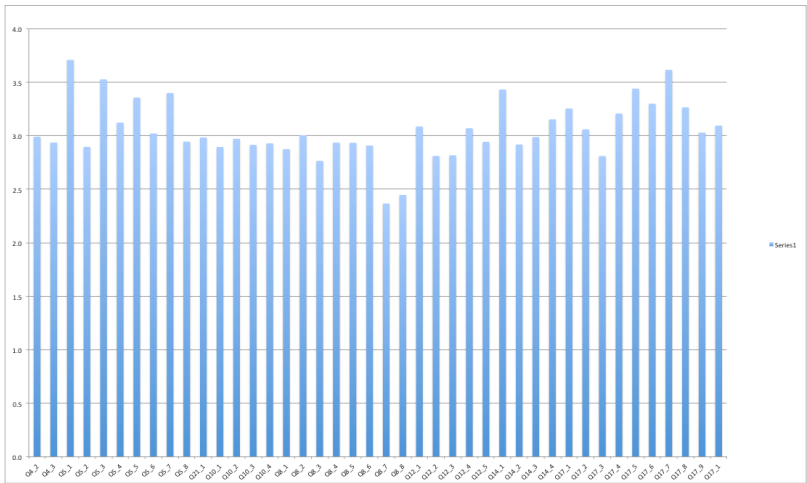
General IT Support Issues and Opportunities-UF is positioned to take advantage of new clinical opportunities

I have the support necessary to adopt new teaching paradigms

Faculty development opportunities are available and fit my needs

UF adequately prepare me for teaching

My college or department adequately prepare me for teaching



Technology support for teaching and plan development is readily available

Instructional designs available where and when it is needed

The IT technology I need for teaching can be easily purchased through my grants and contracts

The IT technology I need for teaching can be easily purchased through my college or department

The teaching software I need is easily accessible and supported

In the classrooms I am assigned to teach:-The audio always works

In the classrooms I am assigned to teach:-The video always works

In the classrooms I am assigned to teach:-My UF login maps all to my drives

In the classrooms I am assigned to teach:-I am able to remotely access my desktop

In the classrooms I am assigned to teach:-I would prefer to be able to remotely access my desktop in each classroom

In the classrooms I am assigned to teach:-I would prefer to have a university provided laptop for me to bring to each classroom

In the classrooms I am assigned to teach:-If I need IT support during class, it is quickly available

In the classrooms I am assigned to teach:-Data storage in support for any teaching assignments is adequate and always accessible

Research Support Issues and Opportunities:-Data storage in support for any research is adequate and always accessible

Research Support Issues and Opportunities:-UF provides the technology I need for any research

Research Support Issues and Opportunities:-The IT technology I need for research can be easily purchased through my grants and contracts

Research Support Issues and Opportunities:-Data storage in support for any research is adequate and always accessible

Research Support Issues and Opportunities:-I have confidence that my data is secure

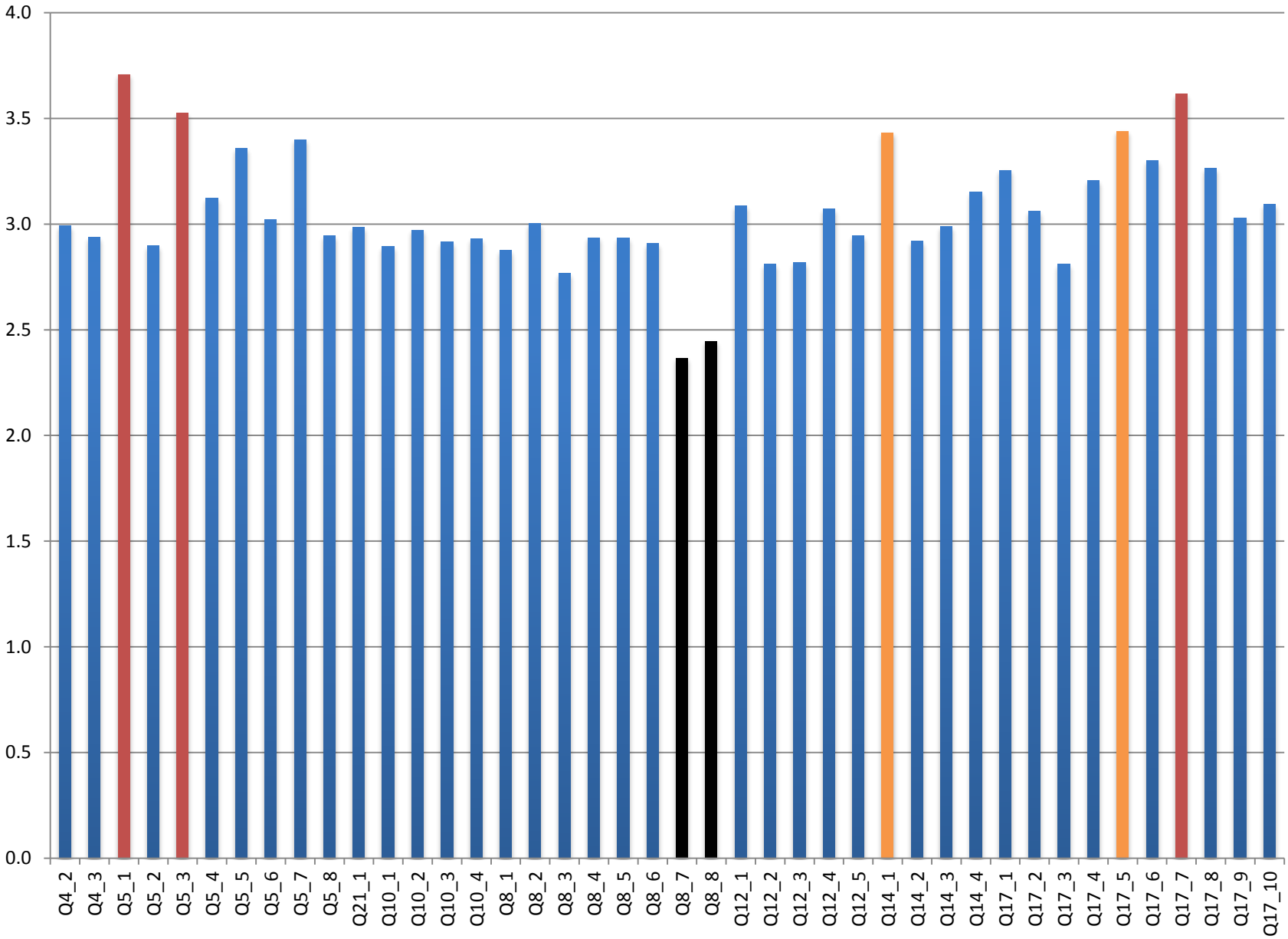
Research Support Issues and Opportunities:-I have confidence that my data is backed up

Research Support Issues and Opportunities:-My research short-term data storage needs are met

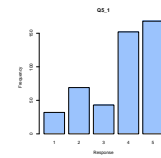
Research Support Issues and Opportunities:-My research long-term data storage needs are met

Research Support Issues and Opportunities:-The technology supports my need to collaborate with outside peers on my research

Research Support Issues and Opportunities:-IT technical assistance for my research is adequate



Best



Q5_1 If I need local (i.e. departmental) IT support I know where it can be obtained, in a timely manner

Q5_3 I can access UF resources on all my devices when on campus

Q17_7 My research short-term data storage needs are met

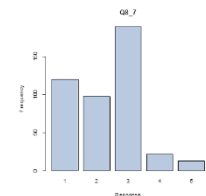
Q14_1 In the classrooms I am assigned to teach I would prefer to be able to remotely access my desktop in each classroom

Q17_5 I have confidence that my data is secure

Worst

Q8_7 I always have the necessary UF network access when on campus

Q8_8 I always have the necessary UF network access when off campus



Tomorrow's meeting

- 2014 Technically Speaking Series: University Websites, Mobile User Experience (Nov. 5-6)
- Design of Websites by function and not administrative hierarchy